



ACADEMY FOR URBAN LEADERSHIP CHARTER SCHOOL

2017-2018

County: CHARTERS
 District: ACADEMY FOR URBAN LEADERSHIP CHARTER SCHOOL
 Principal: MRS. MULLIGAN-PIERRE
 612 AMBOY AVE
 PERTH AMBOY, NJ 08861
<http://www.aulcs.org>
 (848)203-3742 Ext. 101

Total students: **564**

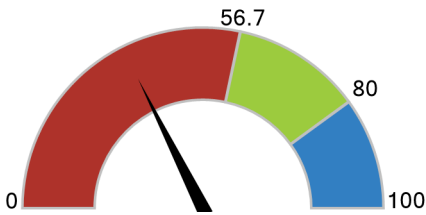
- Economically Disadvantaged: **82.4%**
- Students with Disabilities: **3.0%**
- English Learners: **4.8%**
- Grades offered: **07-12**
- Student to Teacher Ratio: **12:1**
- Teacher Average Experience (years): **7.9**

How did students perform on assessments?

Students that met or exceeded expectations on statewide assessments

English Language Arts

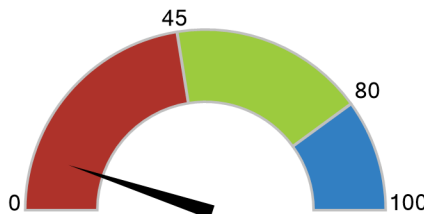
35.2%



Below State: 0 - 56.6% ✓
 Met State: 56.7 - 79.9%
 Met Goal: 80 - 100%

Math

10.1%

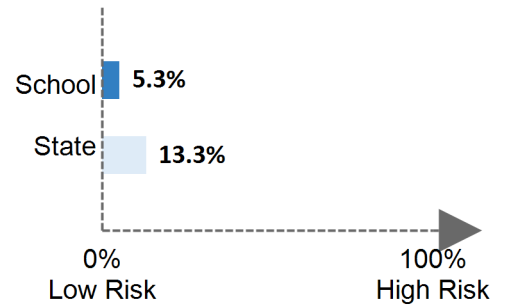


Below State: 0 - 44.9% ✓
 Met State: 45 - 79.9%
 Met Goal: 80 - 100%

Are students at risk?

Students that were absent for 10% or more of days enrolled

Chronic Absenteeism



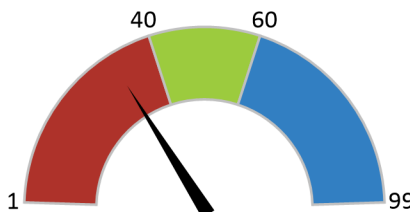
How does student growth compare to other students?

Median Student Growth Percentile

Each student gets a **student growth percentile** from 1 to 99 for English (4th to 8th grade) and Math (4th to 7th grade) that explains their progress compared to students who had similar test scores in the past. If the student growth percentiles for all students in the school are ordered from smallest to largest, the **median student growth percentile** is the percentile in the middle of that list.

English Language Arts

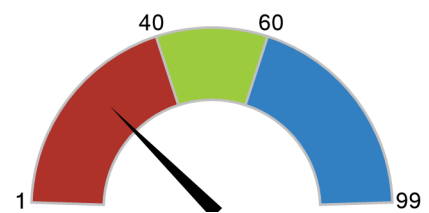
32



Below Standard: 1 - 39.5 ✓
 Met Standard: 40 - 59.5
 Exceeds Standard: 60 - 99

Math

25

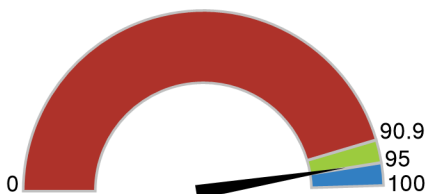


Below Standard: 1 - 39.5 ✓
 Met Standard: 40 - 59.5
 Exceeds Standard: 60 - 99

Are students graduating?

4-year Graduation Rate

94.8%



Below State: 0 - 90.8%
Met State: 90.9 - 94.9% ✓
 Met Goal: 95 - 100%

Are students college and career ready?

AP/IB Courses:

23.3% of 11th and 12th graders enrolled (State = 34.9%)

Dual Enrollment Courses:

0.0% of 11th and 12th graders enrolled (State = 13.3%)

Industry-Valued Credentials:

0.0% of students earned (State = 0.9%)

College Enrollment:

80.2% of graduates enrolled (State = 77.9%)

How to use this report?

- 1 Learn More about this school by viewing the [detailed report](#).
- 2 Start Conversations with school community members and ask questions.
- 3 Engage with your school communities to identify where schools are doing well and where they can improve.